



**FRULLATORE DA TAVOLO**

# **MANUALE UTENTE**

**MJ-BL6006WE**

Avvertenze: Prima di utilizzare questo prodotto, leggere attentamente questo manuale e conservarlo per riferimento futuro. La progettazione e le specifiche sono soggette a modifiche senza preavviso per il miglioramento del prodotto.  
Consultare il rivenditore o il produttore per maggiori dettagli.  
Il diagramma qui sopra è solo per riferimento. Si prega di considerare l'aspetto del prodotto reale come standard.



# LANGUAGES

<b>EN</b>	English
-----------	---------

<b>DE</b>	German
-----------	--------

<b>IT</b>	Italian
-----------	---------

<b>PL</b>	Polish
-----------	--------

<b>CZ</b>	Czech
-----------	-------

<b>SK</b>	Slovakia
-----------	----------

<b>RO</b>	Romania
-----------	---------

## THANK YOU LETTER

Thank you for choosing Midea! Before using your new Midea product, please read this manual thoroughly to ensure that you know how to operate the features and functions that your new appliance offers in a safe way.

# CONTENTS

THANK YOU LETTER	01
SAFETY INSTRUCTIONS	02
SPECIFICATIONS	06
PRODUCT OVERVIEW	07
OPERATION INSTRUCTIONS	08
CLEANING AND MAINTENANCE	11
TROUBLESHOOTING	13
TRADEMARKS, COPYRIGHTS AND LEGAL STATEMENT	14
DISPOSAL AND RECYCLING INFO	15
DATA PROTECTION NOTICE	16







EN

# SAFETY INSTRUCTIONS

## Intended Use

The following safety guidelines are intended to prevent unforeseen risks or damage from unsafe or incorrect operation of the appliance. Please check the packaging and appliance on arrival to make sure everything is intact to ensure safe operation. If any damage, please contact the retailer or dealer. Please not ations or alterations to the appliance are not allowed for your safety concern. Unintended use may cause hazards and loss of warranty claims.

## Explanation of Symbols

	<b>Danger</b> This symbol indicates that there are dangers to the life and health of persons due to extremely flammable gas.
	<b>Warning of electrical voltage</b> This symbol indicates that there is a danger to life and health of persons due to voltage.
	<b>Warning</b> The signal word indicates a hazard with a medium level of risk which, if not avoided, may result in death or serious injury.
	<b>Caution</b> The signal word indicates a hazard with a low degree of risk which, if not avoided, may result in minor or moderate injury.
	<b>Attention</b> The signal word indicates important information (e.g. damage to property), but not danger.
	<b>Observe instructions</b> This symbol indicates that a service technician should only operate and maintain this appliance in accordance with the operating instructions.

EN

Read these operating instructions carefully and attentively before using/commissioning the unit and keep them in the immediate vicinity of the installation site or unit for later use!

## **IMPORTANT SAFETY INSTRUCTIONS**

To avoid the risk of serious injury when using your table blender, basic safety precautions should be followed, including the following.

### **READ ALL INSTRUCTIONS, SAFEGUARDS, AND WARNINGS BEFORE OPERATING BLENDER**

- There is a potential injury from misuse. Please handle it with care.
- Always disconnect the appliance from the supply if it is left unattended and before assembling, disassembling or cleaning.
- This appliance shall not be used by children. Keep the appliance and its cord out of children reach.
- Appliances can be used by persons with reduced physical, sensory or mental capabilities or lack of experience and knowledge if they have been given supervision or instruction concerning use of the appliance in a safe way and if they understand the hazards involved.
- Children shall not play with the appliance.
- Be careful when handling the sharp cutting blades, emptying the bowl and during cleaning.
- Be careful if hot liquid is poured into blender as it can be ejected out of the appliance due to a sudden steaming.
- Switch off the appliance and disconnect from supply before changing accessories or approaching parts that move in use

EN

- This appliance is intended to be used in household and similar applications such as:
  - Staff kitchen areas in shops, offices and other working environments;
  - Farm houses;
  - By clients in hotels, motels and other residential type environments;
  - Bed and breakfast type environments.
  - This appliance conforms to EC Regulation 1935/2004 on materials and articles intended to come into contact with food.
- If the supply cord is damaged, it must be replaced by the manufacturer, its service agent or similarly qualified persons in order to avoid a hazard.

### **⚠ CAUTION**

- In order to avoid a hazard due to inadvertent resetting of the thermal cut-out, this appliance must not be supplied through an external switching device, such as a timer, or connected to a circuit that is regularly switched on and off by the utility. (for MTP version motor)

EN

**SAVE THESE INSTRUCTION.  
THIS UNIT IS INTENDED FOR HOUSEHOLD USE  
ONLY.**

### **⚠ CAUTION**

- Ensure that the blender is switched off before removing

## **⚠ CAUTION**

- The failure to follow any of the important safeguards and the important instructions for safe use is a misuse of your hand blender that can void your warranty and create the risk of serious injury.

## **SAFETY SYSTEM**

- This appliance is equipped with motor thermal fuse. If the appliance overheats, Unplug the appliance and let it cool down until room temperature then put the mains plug back into the power outlet and switch on the appliance again. If the appliance can't work after cool down until room temperature, Maybe the thermal fuse has burn out. Please contact your dealer or an authorized service center.

EN



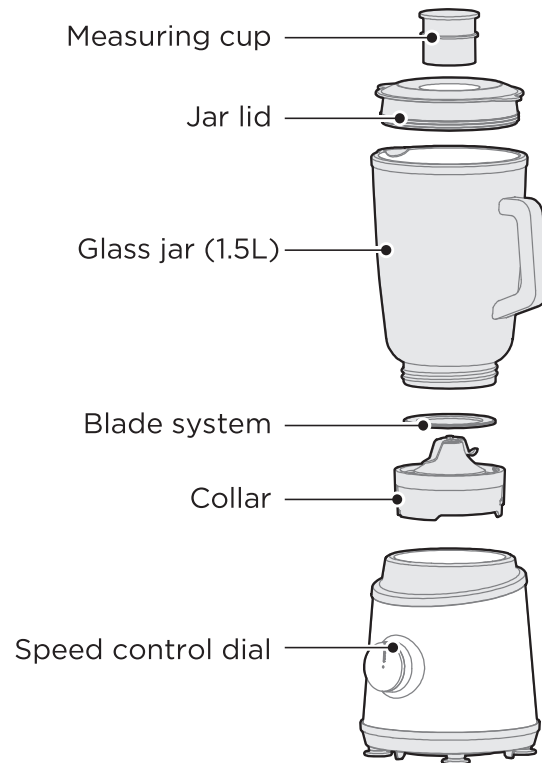
# SPECIFICATIONS

Product Model	MJ-BL6006WE
Rated voltage	220-240V~
Rated frequency	50-60Hz
Rated power	800W

EN

# PRODUCT OVERVIEW

## Part Name

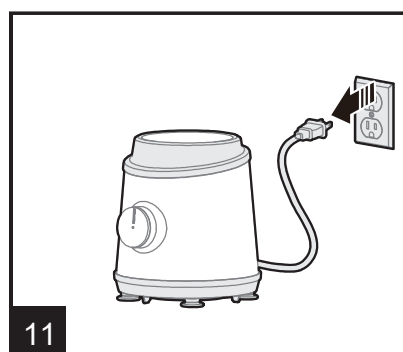
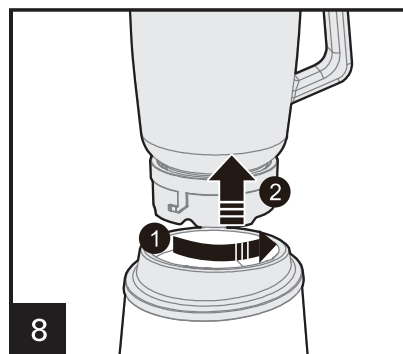
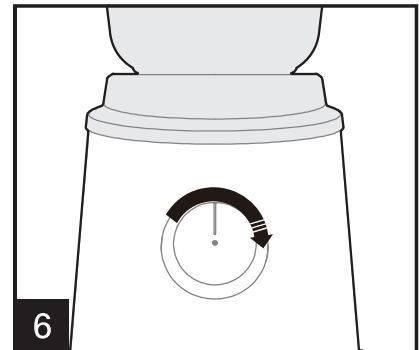
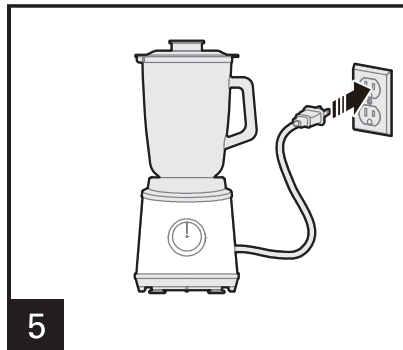
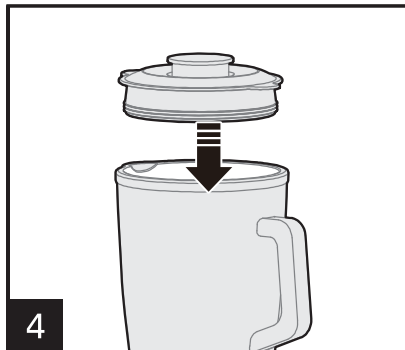
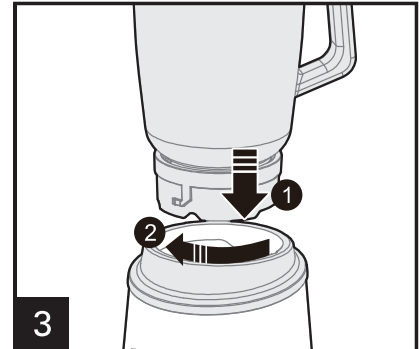
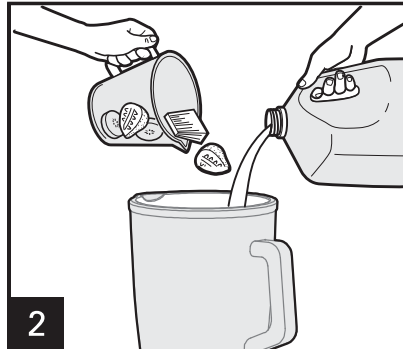
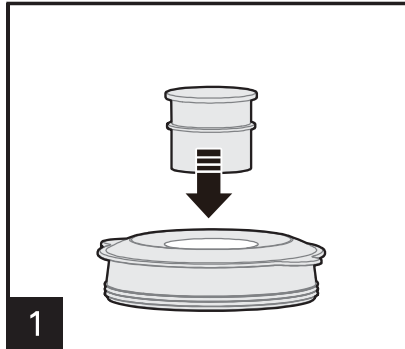


EN

# OPERATION INSTRUCTIONS

## Instructions For Use

### Blender



## Before first use

Before using your blender for the first time, remove any packaging material and promotional labels.

Be careful when handling the blades as they are extremely sharp.

Wash the jug, lids, blade assembly and attachments in warm soapy water with a soft cloth. Rinse and dry thoroughly. All parts (except motor base) may be washed in the dishwasher, on the top shelf.

## Overload protection system

- This appliance is equipped with motor thermal fuse. Machine running time can not be more than 3 minutes. If the appliance loading too much food, and the motor thermal fuse exceeds the protection temperature, the thermal fuse will burn out and the appliance can't work.
- The MAX line is usually a good indicator to prevent overly heavy loading, however some especially dense combinations of ingredients may still strain the motor. If the motor seems to be straining or running slowly, only operate for 10 seconds at a time, or reduce the amount of ingredients used. Adding more liquid can also help to loosen dense mixtures.

### NOTE

- Do not process hot foods or liquids in blender.
- Do not store food or liquids in the blender jar.

EN • Avoid bumping or dropping the blender.

## Recipes

Food	Preparation	Quantity	Functions (Speed)	Time
Smoothie	Milk, fruit, yoghurt, ice cream	Max 800mL	Chop(speed 1); Liquify (speed 2)	60 secs
Ice or frozen fruit	Frozen no larger than standard ice tray	Max 8pieces	Pulse; Liquify (speed 2)	60 secs
Blended soups	Cool to room temp	800mL	Chop(speed 1)	50-60 secs
Grinder	Coffee bean	50g	Speed 2	30secs
Carrots water	Carrots,water	600g carrots 900g water	Speed 2	120secs

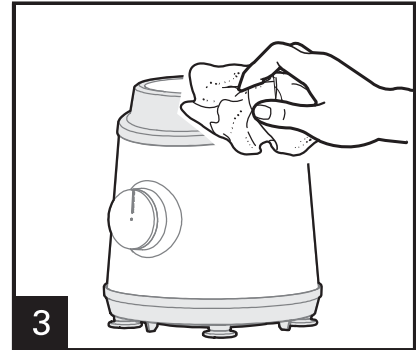
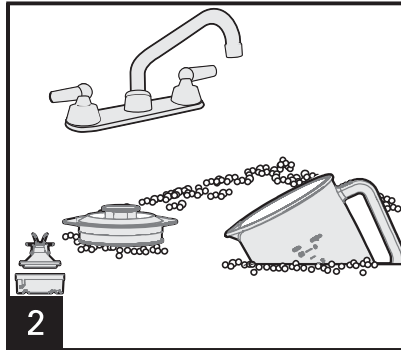
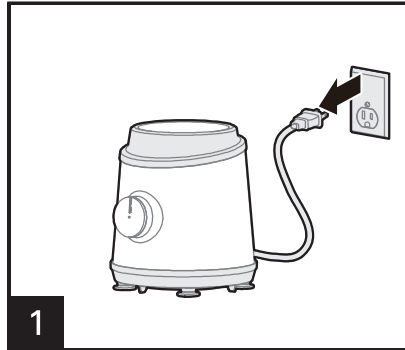
### NOTE

- This blending chart should be used as a guide only.

EN

# CLEANING AND MAINTENANCE

## Cleaning



### **⚠ WARNING:**

Cat hazard: Blades in jar are very sharp. Use caution when cleaning.

Unplug the power cord from the power outlet after use for safety reasons.

### **EN Jug, blades and lids**

Avoid allowing food residue to dry on. Follow these steps as soon as possible after use:

- Rinse most of the residue off the jug, blades and lids.
- Hand wash in warm, soapy water using a mild liquid detergent and non-abrasive sponge.

### **Motor base**

To clean the motor base, wipe with a soft, damp cloth then dry thoroughly. Wipe any excess food particles from the power cord.

### **Cleaning agents**

Do not use abrasive scouring pads or cleaners on either the motor base or any part of the blender, as they may scratch the surface. Use only warm soapy water with a soft cloth.

### **Dishwasher**

The jug, lids and blade assembly may be washed in the dishwasher on the top shelf only.

**Stubborn food stains and odours**

Strong smelling foods such as cumin and coriander, and some vegetables such as carrots may leave an odour or stain.

To remove, pour warm soapy water and fill to the MAX mark. Set aside to soak for 5 minutes. Pour out the water and wash again with mild detergent and warm water, rinse well and dry thoroughly. Store jug with lid off.

**Maintaining**

Store your blender upright with the blender jug assembled on the motor base, or beside it. Do not place anything on top. To allow air to circulate, keep the lid off.

**EN**

# TROUBLESHOOTING

Operation of your appliance can lead to errors and malfunctions. The following tables contain possible causes and notes for resolving an error message or malfunction. It is recommended to read the table below carefully in order to save your time and money that may cost for calling to the service center.

## Abnormality Analysis And Handling

### Abnormality Handling


1. In case of abnormalities such as abnormal noises, smell, smoke, etc., you should immediately cut off power and stop use.
2. If the product cannot work, please check if the power supply is connected, if the switch is put to the ON position and if fittings are installed in place.
3. If the product still cannot work after checks mentioned above, please consult the designated repair centre for maintenance.

### Fault Analysis and Elimination

EN	Problem	Cause
	Motor doesn't start or blade doesn't rotate	<ul style="list-style-type: none"><li>• Check that the power plug is properly inserted into the power outlet.</li></ul>
	Food is lumpy or unevenly chopped	<ul style="list-style-type: none"><li>• This can happen when too much food is being blended at one time. Try a smaller amount, and work in batches if necessary.</li><li>• The ingredients may be too large. Try cutting into smaller pieces. For best results, ingredients should be in pieces no larger than 2cm.</li></ul>
	Food is chopped too fine or is watery	<ul style="list-style-type: none"><li>• Try blending for shorter period of time. Use PULSE for better control.</li></ul>
	Food sticks to blade and jug	<ul style="list-style-type: none"><li>• The mixture may be too thick. Try adding more liquid, pulsing, and/or using a slower speed for blending.</li></ul>
	Blender stopped suddenly while in use	<ul style="list-style-type: none"><li>• We recommend blending in smaller batches, or cutting ingredients into smaller batches.</li></ul>



# TRADEMARKS, COPYRIGHTS AND LEGAL STATEMENT

 Midea logo, word marks, trade name, trade dress and all versions thereof are valuable assets of Midea Group and/or its affiliates (“Midea”), to which Midea owns trademarks, copyrights and other intellectual property rights, and all goodwill derived from using any part of an Midea trademark. Use of Midea trademark for commercial purposes without the prior written consent of Midea may constitute trademark infringement or unfair competition in violation of relevant laws.

This manual is created by Midea and Midea reserves all copyrights thereof. No entity or individual may use, duplicate, modify, distribute in whole or in part this manual, or bundle or sell with other products without the prior written consent of Midea.

All the described functions and instructions were up to date at the time of printing this manual. However, the actual product may vary due to improved functions and designs.

EN

# DISPOSAL AND RECYCLING

## Important Instructions for Environment

Compliance with the WEEE Directive and Disposing of the Waster Product:

This product complies with EU WEEE Directive (2012/19/EU). This product bears a classification symbol for waster electrical and electronic equipment (WEEE).

This symbol indicates that this product shall not be disposed with other household wastes at the end of its service life. Used device must be returned to official collection point for recycling of electrical electronic devices. To find these collection systems please contact to your local authorities or retailer where the product was purchased. Each household performs important role in recovering and recycling of old appliance. Appropriate disposal of used appliance helps prevent potential negative consequences for the environment and human health.



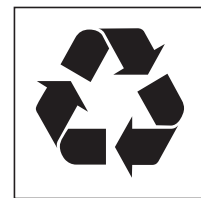
EN

## Compliance with RoHS Directive

The product you have purchased complies with EU RoHS Directive (2011/65/EU). It does not contain harmful and prohibited materials specified in the Directive.

## Package Information

Packaging materials of the product are manufactured from recyclable materials in accordance with our National Environment Regulations. Do not dispose of the packaging materials together with the domestic or other wastes. Take them to the packaging material collection points designated by the local authorities.



# DATA PROTECTION NOTICE

For the provision of the services agreed with the customer, we agree to comply without restriction with all stipulations of applicable data protection law, in line with agreed countries within which services to the customer will be delivered, as well as, where applicable, the EU General Data Protection Regulation (GDPR).

Generally, our data processing is to fulfil our obligation under contract with you and for product safety reasons, to safeguard your rights in connection with warranty and product registration questions. In some cases, but only if appropriate data protection is ensured, personal data might be transferred to recipients located outside of the European Economic Area.

Further information are provided on request. You can contact our Data Protection Officer via **MideaDPO@midea.com**. To exercise your rights such as right to object your personal data being processed for direct marketing purposes, please contact us via **MideaDPO@midea.com**. To find further information, please follow the QR Code.

EN



[www.midea.com](http://www.midea.com)

© Midea 2022 all rights reserved

MIDEA	Midea Europe GmbH Ludwig-Erhard-Str.14, 65760 Eschborn. Germany	<a href="mailto:kundenservice@midea.com">kundenservice@midea.com</a>
	MIDEA ITALIA S.R.L. Via Luigi Bodio 29/37 -Milano (MI) 20158 Italy	<a href="mailto:assistenza@midea.com">assistenza@midea.com</a>
	Midea Electrics France 253 RUE SAINT-HONORE 75001 PARIS	<a href="mailto:service_france@midea.com">service_france@midea.com</a>
	MIDEA HOME APPLIANCES UK LTD Conavon Court Ground Floor, 12 Blackfriars Street, Salford, Manchester M3 5BQ UK	<a href="mailto:service_uk@midea.com">service_uk@midea.com</a>

Guangdong Midea Consumer Electric Manufacturing Co., Ltd 19 Sanle Road, Beijiao, Shunde, Foshan, Guangdong, China.

Hama Polska Sp. z o.o. | Robakowo, ul. Poznańska 5 | 62-023 Gądko

